



Kings Drive

Kings Drive | Hassocks | West Sussex

A new development of four highly specified 3 bedroom semi detached homes

Wolstunbury · Wilmington · Clayton · Firle

A development by

cross|stone
HOMES

www.crossstone.co.uk

Hassocks



Hassocks, West Sussex

The popular village of Hassocks is centrally located within Mid Sussex and is only 7 miles north of the City of Brighton & Hove. A major benefit of living in Hassocks is the immediate access from Hassocks main line railway station to the London/Brighton railway line. The station is within easy walking distance of Kings Drive.

Hassocks is situated within the Sussex Weald and has stunning views of the South Downs National Park to the south. The village offers a wide variety of both independent and multiple shops including cafes, specialist shops, opticians, banks and restaurants.

There is a fine selection of pubs available in and around the village as well as within neighbouring villages such as Ditchling and Hurstpierpoint.

Two miles west of Hassocks in the adjoining village of Hurstpierpoint lies Danny House, an Elizabethan manor where David Lloyd George came to draw up terms for the armistice at the end of World War I.

On the skyline above Hassocks there are two windmills, named Clayton Windmills but known locally as 'Jack & Jill'. Jack is a tower mill and was built in 1866. Jill, a post mill, was built in Dyke Road in Brighton in 1821 and was later moved to Clayton in 1852 by a team of oxen. The working life of the mills ended in about 1906, and Jack is now in private ownership; Jill was restored in 1986 and is open to the public.



Hassocks Mainline Railway Station



Danny House Hurstpierpoint



The South Downs National Park

Kings Drive



Photo is of the newly refurbished houses Wolstunbury and Wilmington

Cross Stone Homes at Kings Drive

Cross Stone Homes focus on sustainable development and wherever possible we aim to re-use buildings, ensuring that our developments deliver the most sustainable and environmentally friendly development solution for the environment.

Our Kings Drive development comprises the conversion and comprehensive refurbishment of a former house to provide two semi detached houses and the construction of two new semi detached houses on an adjoining plot, which stood vacant for many years. The development essentially now completes the street scene within Kings Drive.

The four new houses have been named after Sussex Beacons, the two new houses to be known as Clayton & Firle, whilst the two refurbished houses are to be known as Wolstunbury & Wilmington.

All of our developments are built to the highest standards incorporating tried and tested traditional construction methods, as well as employing the latest building technology to ensure we maintain the highest standards of construction and very importantly insulation.

The two new homes will be constructed to the Code for Sustainable Homes Level 3.

Wolstunbury & Wilmington **Ready Now**

Two comprehensively refurbished 3 bedroom semi detached houses, with off road parking and well proportioned south westerly rear gardens.

Clayton & Firle **Ready Spring 2012**

Two new 3 bedroom semi detached houses, with off road parking and well proportioned south westerly rear gardens.



The Homes



Specification



Specification

Each of the houses will incorporate:

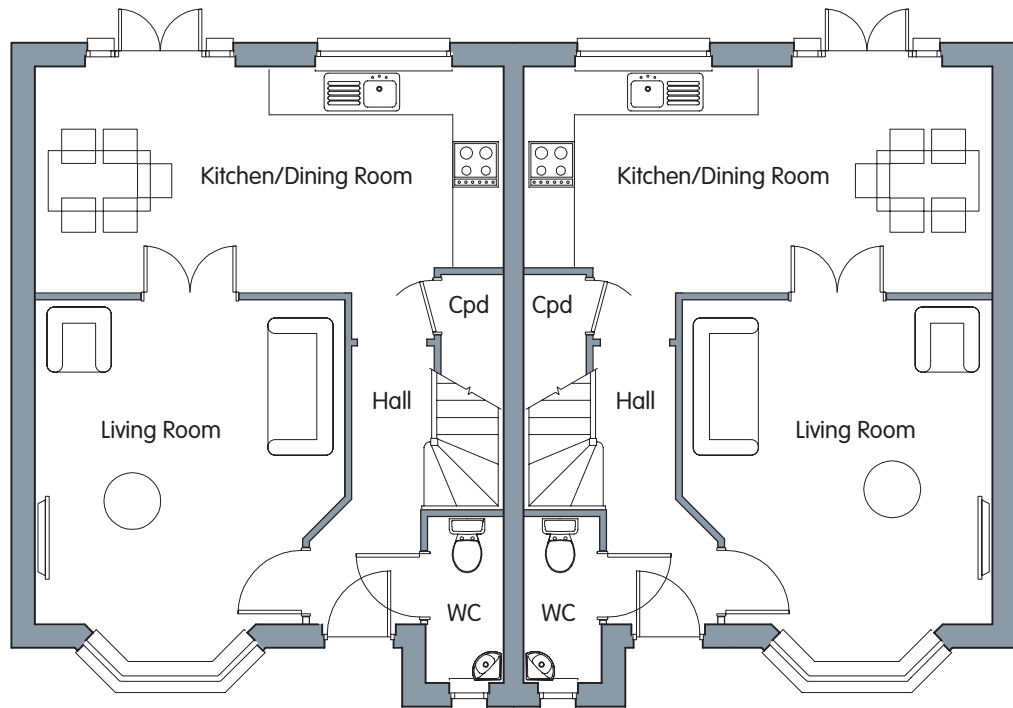
- Glendoven Cream Kitchen units including built in appliances, Nickel Downlighters and circular plinth lights, Nickel effect bar handles, tower units, display units (Wolstunbury), soft close drawers and hinges and magic pull out storage units
- Kitchen worktops square edge oak block style with upstand detail, splash backs in Porcelanosa Glass Bianco tiles
- Kitchen sinks Lamona Ulswater 1.5 sink bowls with Porcelanosa NK single lever mixer taps
- Built in appliances include Bosch stainless steel 5 burner Gas Hob, Bosch stainless steel double fan oven, Bosch stainless steel chimney extractor, Whirlpool Microwave, Lamona 50/50 Fridge Freezer, 1400rpm washing machine, integrated tall tub dishwasher
- Kitchens and Cloakrooms finished with Porcelanosa 'Cube Nature' and 'Oxon Marfil' ceramic tiles to walls and floors
- Sanitary ware throughout is Porcelanosa NK ONE Concept range, with taps and fittings from the Ronda and Nantes range. Baths have combined shower with full glazed screens
- Gas central heating with radiators to refurbished houses and under floor heating to new houses
- Good size lofts with loft ladders
- Built in wardrobes to master bedrooms (excl. Wilmington)
- Gardens with patios laid with Marshalls Saxon Slabs and good sized lawn areas
- Front garden area finished in Brindle Brick Paviours and providing off road parking
- Double glazing throughout
- Engineered 3 strip wood Oak floors in entrance halls
- Fitted 80/20 wool mix fitted neutral carpets throughout
- Electric smoke detection systems

Clayton & Firle Floor Plans

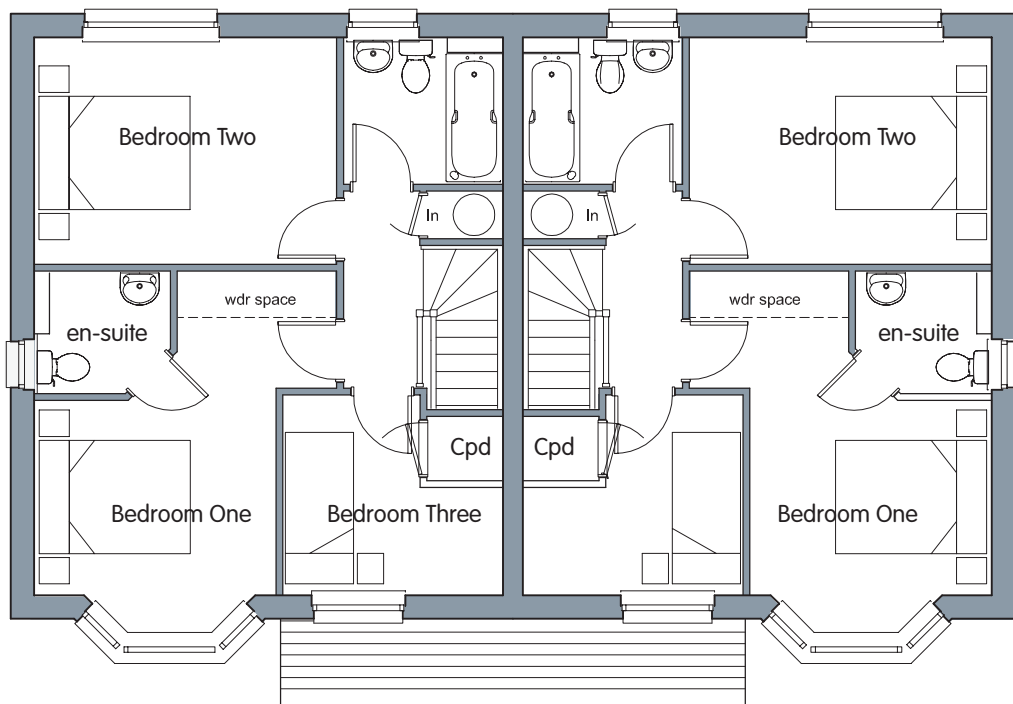
NEW BUILD HOUSES READY SPRING 2012

(Measurements to be verified on completion)

Ground Floor Plans



First Floor Plans



CLAYTON

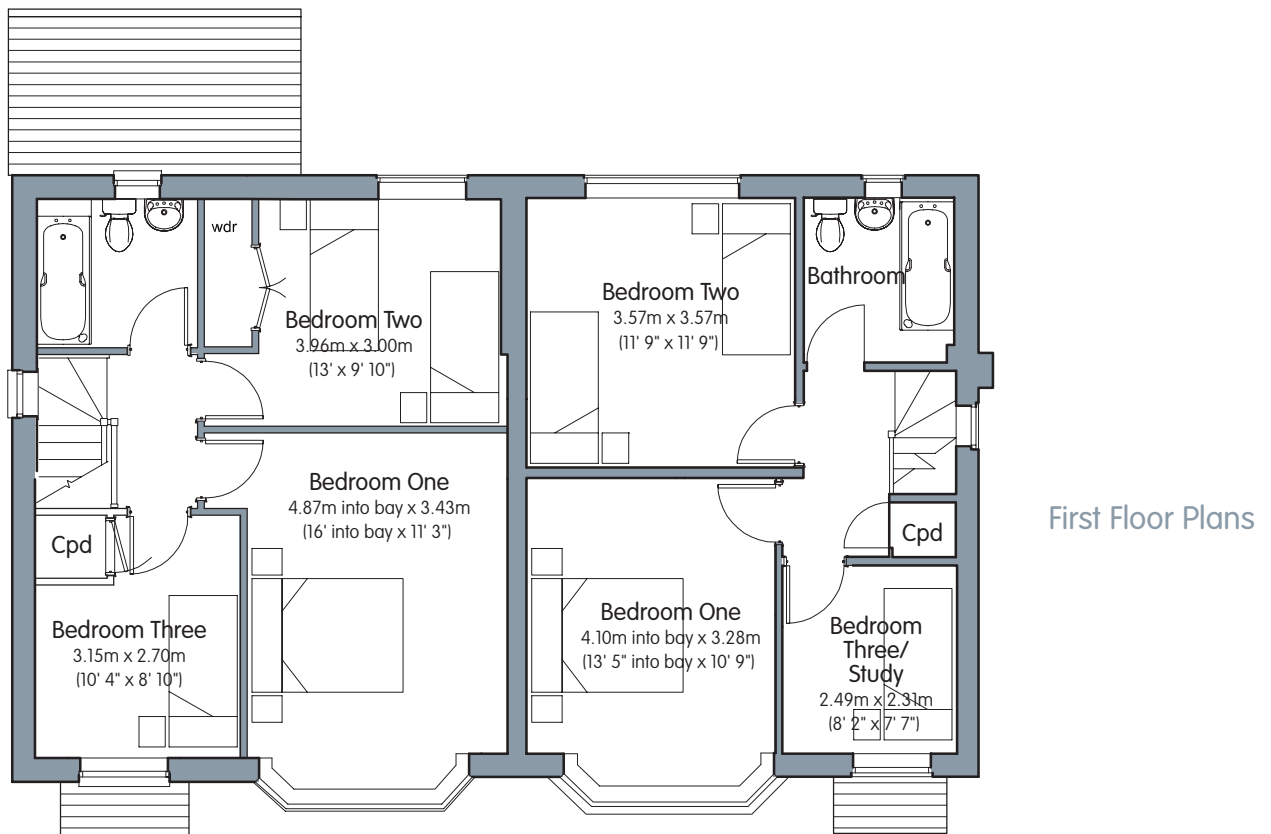
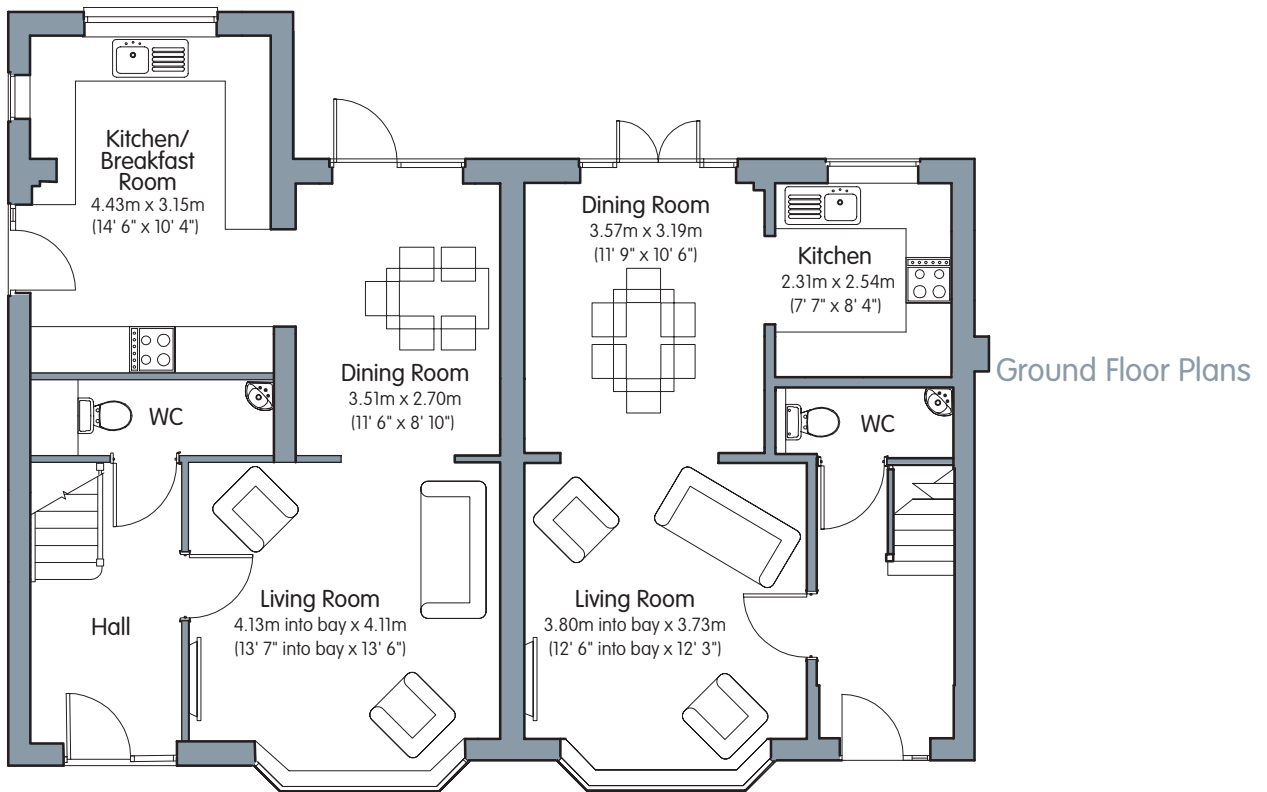
49a Kings Drive Hassocks

FIRLE

49b Kings Drive Hassocks

Wolstunbury & Wilmington Floor Plans

REFURBISHED HOUSES READY NOW



WOLSTUNBURY

49c Kings Drive Hassocks

WILMINGTON

49d Kings Drive Hassocks



Kings Drive

Kings Drive | Hassocks | West Sussex

A new development of four highly specified 3 bedroom semi detached homes

Price

Each house will be sold freehold, price upon application

Further information



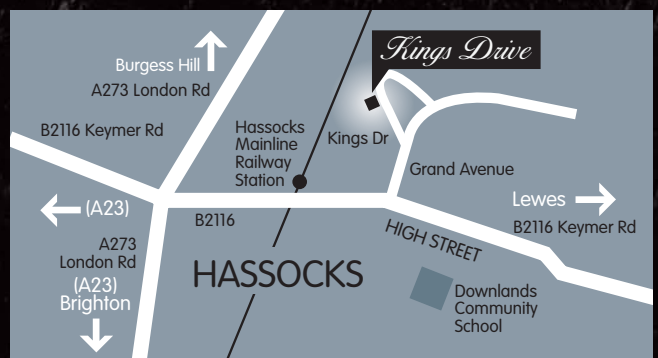
Bryn Thomas
Lewes Office

brynt@oakleyresidential.com
T: 01273 487444

James Epps

Brighton & Hove Office

jamese@oakleyresidential.com
T: 01273 688881



A party connected to Oakley Residential has an interest in this property

Misrepresentation Act 1967. Oakley Commercial for themselves and the Landlord/vendor of this property who's agents they are, give notice that these particulars do not constitute any part of an offer or contract.